

CDE Labs

Step 1

Guidelines for users of CDE Workstations

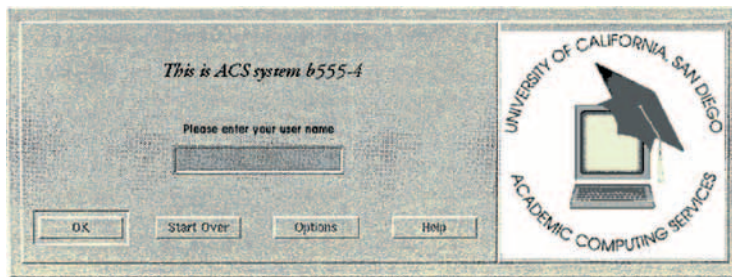


About CDE

CDE stands for Common Desktop Environment and is the graphical user interface for the workstations of several Unix operating systems, including Solaris and HP-UX.

Logging in

If the screen is dark, press the **RETURN** key to activate the display.



The login screen should appear. The “text entry cursor” (a flashing vertical bar) should appear in the box under “Please enter your user name”. Type your username (lowercase only) and press **RETURN**.

The login screen will disappear and be replaced by a password screen. A new cursor will be in the “Password:” box. When you type your password, it does not appear on the display. This is to prevent anyone else from seeing it. Type your password and press **RETURN**. The password screen will disappear and, in its place, the workspace will appear. It will probably contain “Help Viewer”, “Console” and “File Manager” windows, and a “Front Panel” bar. Examples of those appear above and on the reverse.

Troubles logging in

If you press the **RETURN** key and the screen remains dark, the workstation may have been turned off. Check for power lights on the monitor and the system unit. If either is off, try turning it on by pushing the power button. It may be located on the front at the lower right or on the rear of the machine.

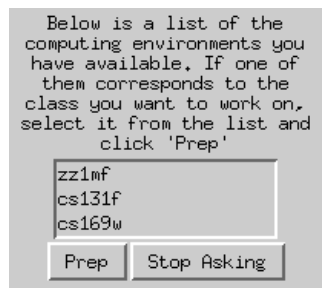
If the message box “Login incorrect; please try again” appears you may have mistyped your username or password (use all lowercase and no spaces for your username, don’t substitute letters for digits); your account may be in a different lab and not in this one; you may have the right lab but the account has not been set up yet. If you don’t have any luck after several tries see your class TA or contact the Accounts Office (2113 APM,

534-4060, Monday-Friday 10am-3:30 pm).

There’s also a “Help” button on the login screen. Click it to open a dialog box; it may help refresh your memory or provide additional clues.

Your Class Computing Environment

Some classes require changes to your computing environment. If you have such a class, before the CDE workspace appears a window will pop up asking you to select the computing environment you want. The names correspond to those on the account slips you received for those classes. Select the appropriate environment name from the list and click ‘prep’.



This has the same effect as typing ‘prep (environment)’ from the command line, but does it automatically for each window you open during this session. If you want to use your normal computing environment, select the entry that corresponds to your user name and click ‘prep’. Click ‘Stop Asking’ if you always want to run the ‘prep’ command yourself, and the menu will not be displayed until different classes become available.

Logging out

You can logout from your workspace session by choosing “Log out...” from the workspace menu (press the right mouse button with the pointer over the workspace backdrop). You can also click on the “Exit” button near the center of the Front Panel bar (shown above). Either way, you’ll see a dialog box asking for confirmation. Click “OK” to confirm, or “Cancel” if you change your mind.

Sometimes, it may be necessary for you to cancel a session without using the normal logout procedure (for example, if some mistake deactivated both the Front Panel’s Exit button and the workspace menu). You can do this by killing the parent Xsession process, usually via a telnet connection from another workstation. The system will return to the login screen without saving your current session. If you continue to have problems, call x43-ACS for assistance. Be sure to include the name and number of the workstation you are using.

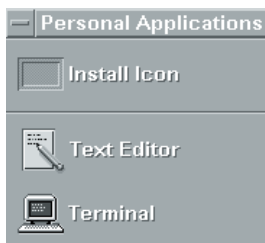


Please: Do not turn off the workstation.

CDE, Indicators and Services

As mentioned earlier, CDE is the graphical user interface for many Unix operating systems. It is designed to provide a uniform interface, regardless of the underlying operating system. With it you control the workstation via graphical objects rather than typing commands. CDE sits on top of the X Window System, and its components handle specific functions.

After logging in, the Front Panel bar appears at the bottom of your screen (an example is shown at the top of this page). It contains icons representing system indicators and services. Indicators merely display system info; you can start services by clicking on them. Indicators include the Clock and Progress Light. Services available here are: Calendar Program, File Manager, Personal Applications menu, Mailer, Screen Lock, Sound Manager, Workspace switches, Exit Button, Print Menu, Style Manager, Application Directory, Help Menu, and Trash Can.

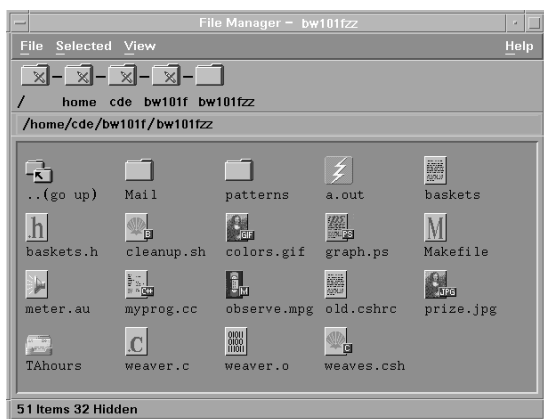


Terminals, Applications and File Manager

The “Console” window is a terminal window created by the Login Manager. As a terminal window, it emulates a complete display terminal. This means you can use it as you would a terminal to enter operating system (Unix)

commands. You can open additional terminal windows by clicking on the “terminal” button, found in the Personal Applications menu on the Front Panel. This menu provides another way to launch applications without reference to Unix commands.

First, notice the “pop-up menu” that appears when you **click on**



the arrow above its icon on the Front Panel. You can launch any of the applications simply by clicking on them.



You can also copy any application from the Application directories to your Personal Applications menu by dragging their icon onto the “Install Icon” menu option. To retract the menu without selecting any of its contents, click on the inverted triangle at its base.



The File Manager is a CDE application which handles your files without reference to Unix commands. You can move through directories, create, remove, rename or change protections on files, as well as select actions defined for them (e.g. “edit” or “execute”). Double click on a directory to examine its contents. Double click on an action to start it. You can also copy actions in the File Manager to your Desktop, or add them to the menus on your Front Panel, by dragging them onto the “Install Icon” menu option.

The Workspace switches in the center of the Front Panel bar allow you to switch between four “virtual workspaces” simply by clicking on one of the four labels. Double click on any of the labels to customize their names.



You can also use the Style Manager to customize your palette, font size, backdrop pattern, and several other things.

Unix documentation

There are several sources of Unix documentation: on-line information, flyers, bookstores, and libraries. On-line information includes a search engine which spans ACS web pages. This help system will provide you with information you need about Academic Computing Services’ Unix systems. As well as supplying many introductory articles, it can locate articles relating to a keyword you provide. The help system can be accessed through the Help Manager, as discussed below.



Help Manager and Tutorials

Clicking above the Help Manager button (the bookshelf icon with an overprinted “?” on the Front Panel bar) opens another “pop-up menu”. Clicking on one of these icons will open a hyper-text based help application. In each of the hyper-text based applications, clicking on highlighted text or icons will bring up related text. The “ACS Help” icon opens a session in Netscape, turned to the ACS help system keyword prompt. Type the subject of the topic you are interested in for ACS specific help on that topic. The other icons contain information specific to CDE or to the operating system you are using. Explore them and you will find you have access to full manuals of online information on various applications, as well